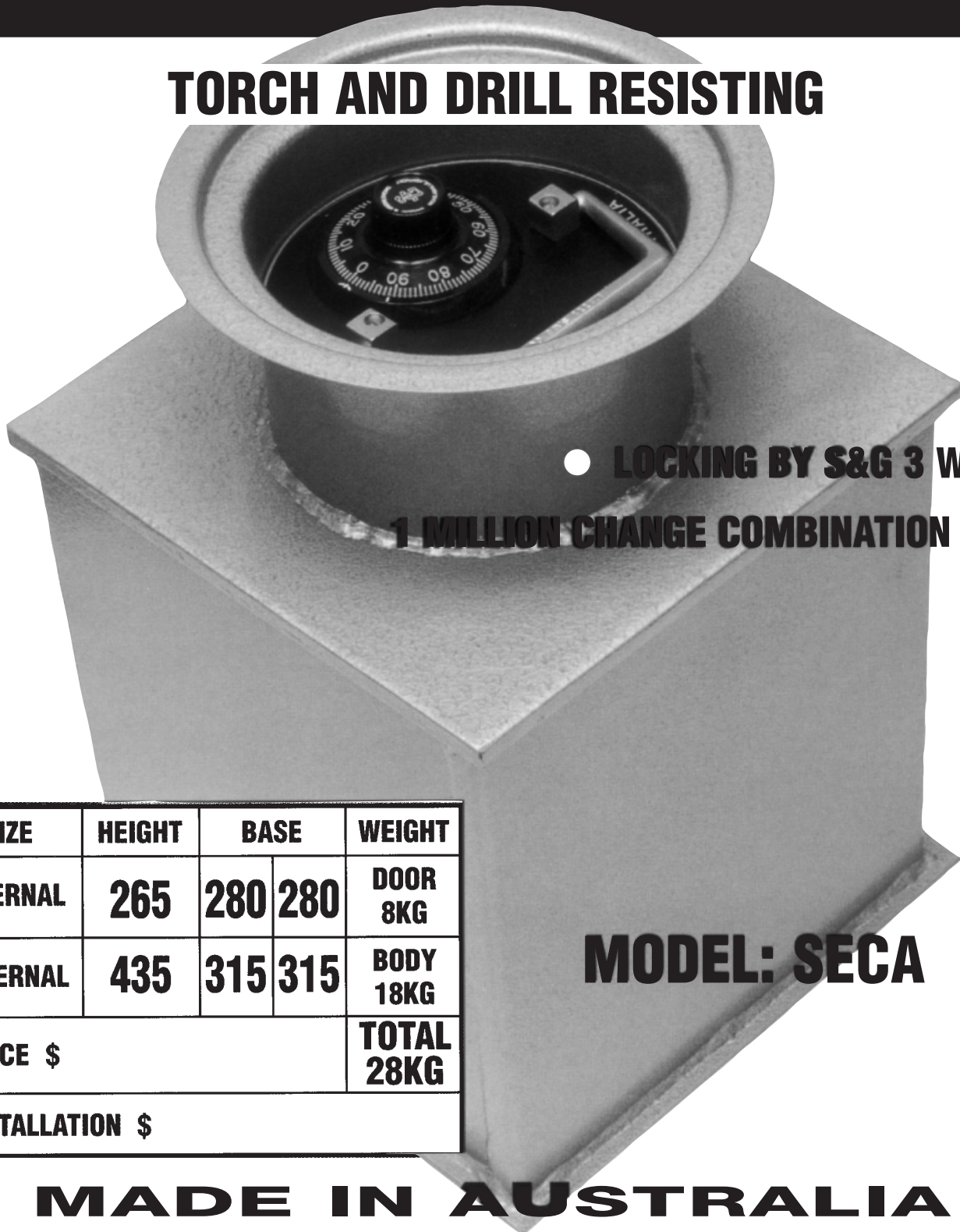


SECURE-ALL

TDR IN FLOOR SAFES

TORCH AND DRILL RESISTING



- **LOCKING BY S&G 3 WHEEL
1 MILLION CHANGE COMBINATION LOCK**

SIZE	HEIGHT	BASE		WEIGHT
INTERNAL	265	280	280	DOOR 8KG
EXTERNAL	435	315	315	BODY 18KG
PRICE \$				TOTAL 28KG
INSTALLATION \$				

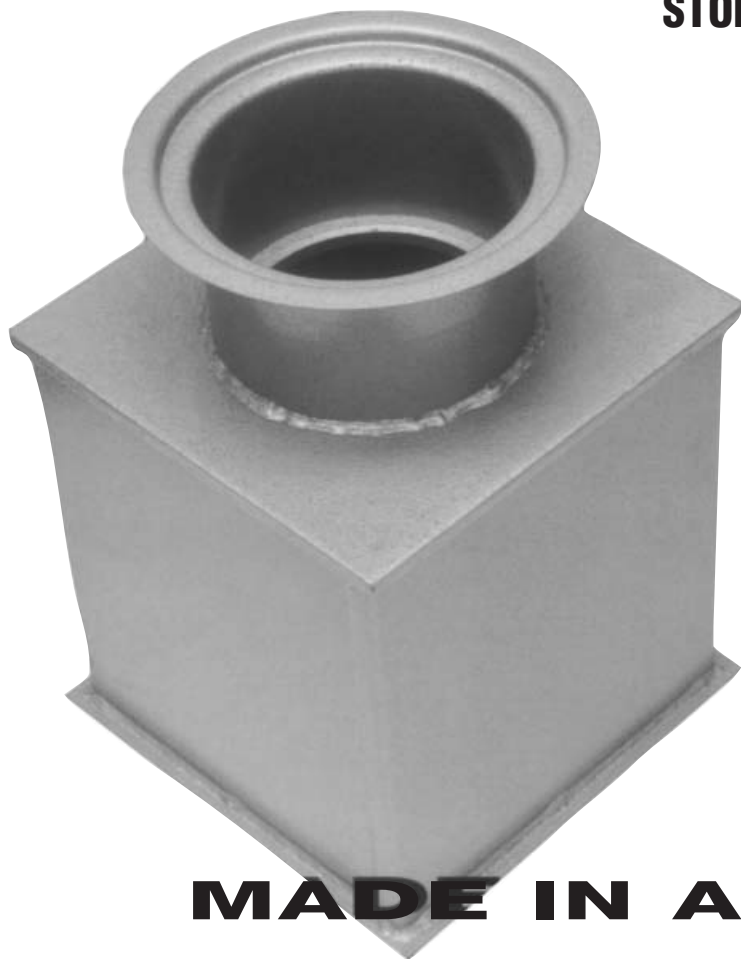
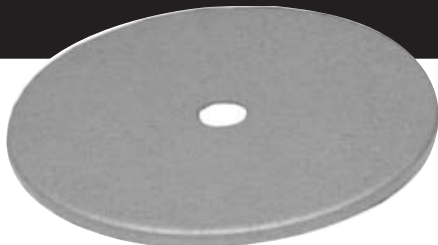
MODEL: SECA

MADE IN AUSTRALIA

**SUGGESTED INSURABLE CASH RATING FOR SECURE-ALL FLOOR SAFES
IN AN UNSUPPORTED (NO ALARMS) DOMESTIC SITUATION IS \$30,000**

SECURE-ALL

TDR IN FLOOR SAFES



TORCH AND DRILL RESISTING

- FLUSH FITTING LID TO AID CONCEALMENT AND FIRE PROTECTION
- INTERCHANGEABLE DOOR (8KG) SECURED BY 3 WHEEL S&G COMBINATION LOCK
- CLEAR 155mm ACCESS TO CONTENTS STORAGE AREA 265 x (280 x 280)

RECOMMENDED INSTALLATION PROCEDURE.

The safes may be installed in either concrete or timber floors. The opening in the floor should be at least 500mm square by 550mm deep.

The safe should be secured with a strong mix concrete 1 x sand, 1 x stone, 1 x cement. Steel reinforcing material can also be used to help bond the concrete and provide better security.

It is recommended that the mix be poured so that a concrete cover of at least 100mm (4") exists around each side of the safe and brought level with top.

Floor safes are not waterproof. In damp situations the concrete should contain a waterproofing agent such as "Silasec" or "Yurite" (available from hardware stores). Whilst the concrete is setting, the door should be removed.

MADE IN AUSTRALIA

ALL CMI SAFES COME WITH A FIVE YEAR WARRANTY, EXCLUDING FREIGHT & TRAVELLING, WITH A 12 MONTH WARRANTY ON LOCKS.